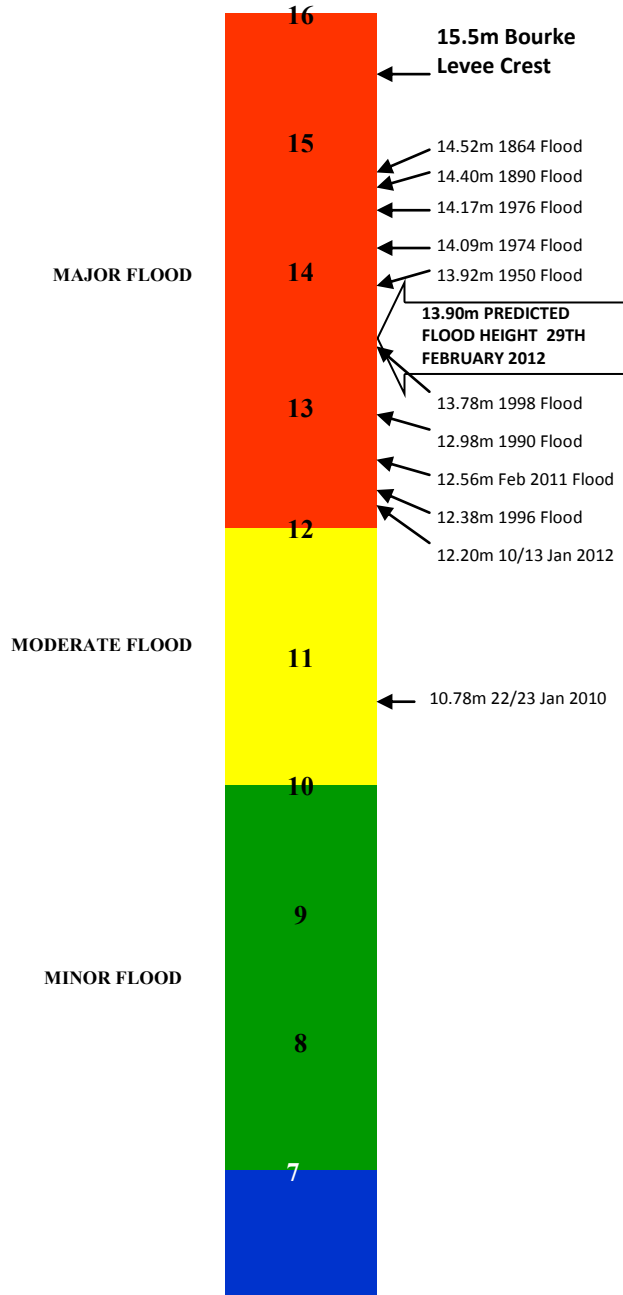


Flood Level Information



Remember don't swim in flood water, listen for updates on river heights and predictions and most importantly ensure that you and your family stay safe

River heights can be found at

<http://waterinfo.nsw.gov.au/drr/darling.shtml>

River Height Predictions can be found at

<http://www.weatherzone.com.au/warning.jsp?id=IDN36634>

For Road Conditions in surrounding Shire Council areas please contact the following:

Contact Number	After Hours	Council
02 6836 5888	1800 227 228	Cobar Shire Council
02 6830 5100	0427 392 101	Brewarrina Shire Council
02 6847 6600	02 6847 6600	Warren Shire Council
02 6835 9000	0428 239 491	Nyngan Shire Council (Bogan)
02 6828 1399		Walgett Shire Council
07 4655 8400	0497 731 540	Cunnamulla (Paroo Shire Council)
07 4655 3133		Hungerford (Bulloo Shire)
24 Hr - 08 8091 5155		Wilcannia (Central Darling Shire)
24 Hr - 08 8082 6660		Broken Hill (Unincorporated Area)
132701		RTA Live Traffic
24 Hr - 1300 130 595		QLD Road Information

FOR EMERGENCY HELP IN FLOODS AND STORMS CALL THE SES ON 132 500

SES General Inquiries - 132500
 Bourke Police—02 68700899
 Bourke Shire Council - 02 68308000
 BSC After Hours - 0419 722 055



DARLING RIVER INFORMATION SHEET

Issued 10th February 2012



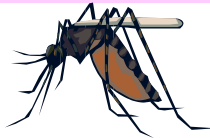
Bourke Shire Council is issuing this information sheet to assist readers in understanding the Darling River as significant flows past Bourke township.

Current River Predictions

The Darling River is currently predicted to peak at Bourke from the recent January flood rains in Queensland and North Western NSW about 29th February at approximately 13.90 metres, on 29th February or over 300,000 ML per day.

What are the greatest risks for Bourke in the immediate future?

- SES have advised that a flood height of 13.8 metres, the flood water cuts the Mitchell Highway (Sydney Road) and with a predicted height of 13.9 metres, 10cm of water will cover the road. Heavy vehicles should be able to get through and it is likely this will occur around the 27th February for a few days, cutting Bourke off for a few days only.
- Significant heavy rainfall over the town whilst the flood gates are closed could result in ponding of water inside the town levee, choking the town sewerage system and flooding property.



Mosquitoes



Snakes



Sandflies

Bourke and Alice Edwards Levees

- The Bourke town levee has been constructed with a surface level 15.5 metres above the riverbed level. The only exception to this is a short section the wharf, which is 14.5 metres above the riverbed level, and which can be quickly, easily & securely raised if ever necessary.
- The Bourke town levee was totally restored during 2011 to ensure it remains structurally sound.
- Council understands the privately owned levee around Alice Edwards Village has been constructed at approximately 15 metres. Alice Edwards Village can be expected to be totally isolated by floodwater across the Parkdale Road. Residents should plan with local Police before the flood arrives.

Rural Roads

As the flood peaks move through the Shire, a number of roads will be being flooded and closed. Daily Shire road reports provide constant updates.

Avoid driving through flood waters and on closed roads.

FLOOD ISSUES

Date	Height in metres	Estimated Daily Flow in Megalitres (ML)
1864	14.52	Not available
1890	14.40	Not available
1976	14.17	Approx 500,000
1974	14.09	450,000
1950	13.92	Approx 350,000

Flood Heights over last 22 years

1990	12.98	140,000
1996	12.38	95,000
1998	13.78	290,000 approx
2010(22 nd to 23 rd January)	10.78	47,800
2011(10 th to 13 th January)	12.35	87,665
2011 (19 th February)	12.56	88,029

Approximate daily volume for each metre rise

	11.00	50,000
	12.00	80,000
	13.00	142,000
	14.00	390,000

DID YOU KNOW

Notes:

- ◇ Each Megalitre (ML) is approximately equivalent to the volume in an Olympic swimming pool.
- ◇ The volume of water approximately doubles for each metre rise above 11 metres.
- ◇ During 30 days over December 2011 & January 2012, approximately 1,900ML flowed past Bourke. This is the equivalent of about 4 Sydney Harbours
- ◇ It takes about 8 days for a flow at Walgett to reach Brewarrina & about a further 8 days to reach Bourke

Town Planning and Preparations

- ⇒ The Local Emergency Management Committee is meeting formally on a regular basis. The group involves a diversity of resource agencies, convened by the Police as the Local Emergency Operations Controller, working in partnership with SES who are the lead combat agency for floods.
- ⇒ Flood gates through the levee banks will be closed as occurs every time there is a high river.
- ⇒ Extra pumps have been strategically placed around town in readiness to pump any surface water which may accumulate from local rainfall



Safety with flooding

- ◆ Swimming in the river when flowing at high levels is dangerous and strongly discouraged. Turbulent, fast flowing, dirty water with submerged trees and other snags creates unpredictable high risks. Parents are urged to keep their children safe and be aware of their locations at all times, to avoid any tragic outcomes.
- ◆ Diving from or swimming near the Wharf, North Bourke Bridges, Weir or other structures must be avoided.
- ◆ With the high flow in the river, power lines are close to the water surface. Essential Energy recommend that the minimum clearance for power lines for recreational boating is 3 metres.
- ◆ People using water craft on the river must ensure they stay away from the electricity network, including poles, substations, fallen power lines and any objects in contact with them because electricity can arc to surrounding objects which means that you can be seriously injured by electricity without actually touching the powerlines.
- ◆ People using water craft should also be aware of fences and other submerged objects.
- ◆ Whilst mosquitoes and sandflies are prevalent, common sense avoidance of exposure should be practiced.
- ◆ Mosquitoes favour long grasses and stagnant water which provide a good breeding ground and shelter